



## Sviluppo di architetture orientate ai servizi con EclipseSOA

Dr. Alberto Lagna  
Chief Technology Officer Biznology srl  
SOPERA master reseller for Italy





- Oliver Wolf è architetto e product manager presso [SOPERA GmbH](#), pioniere nella fornitura di servizi di supporto alla realizzazione di soluzioni SOA open source, con sede a Bonn, in Germania.
- Oliver è responsabile della core service platform di SOPERA e contribuisce alla gestione del [progetto Swordfish di Eclipse](#).
- Prima di entrare a far parte del team di SOPERA, Oliver ha ricoperto diverse posizioni nell'ambito della consulenza su architetture software e sulla sicurezza nell'Information Technology.



## *Why would I want to take a closer look?*

*If you are a software developer...*

***Swordfish makes it easy to develop  
enterprise services on OSGi.***

*If you are an enterprise architect...*

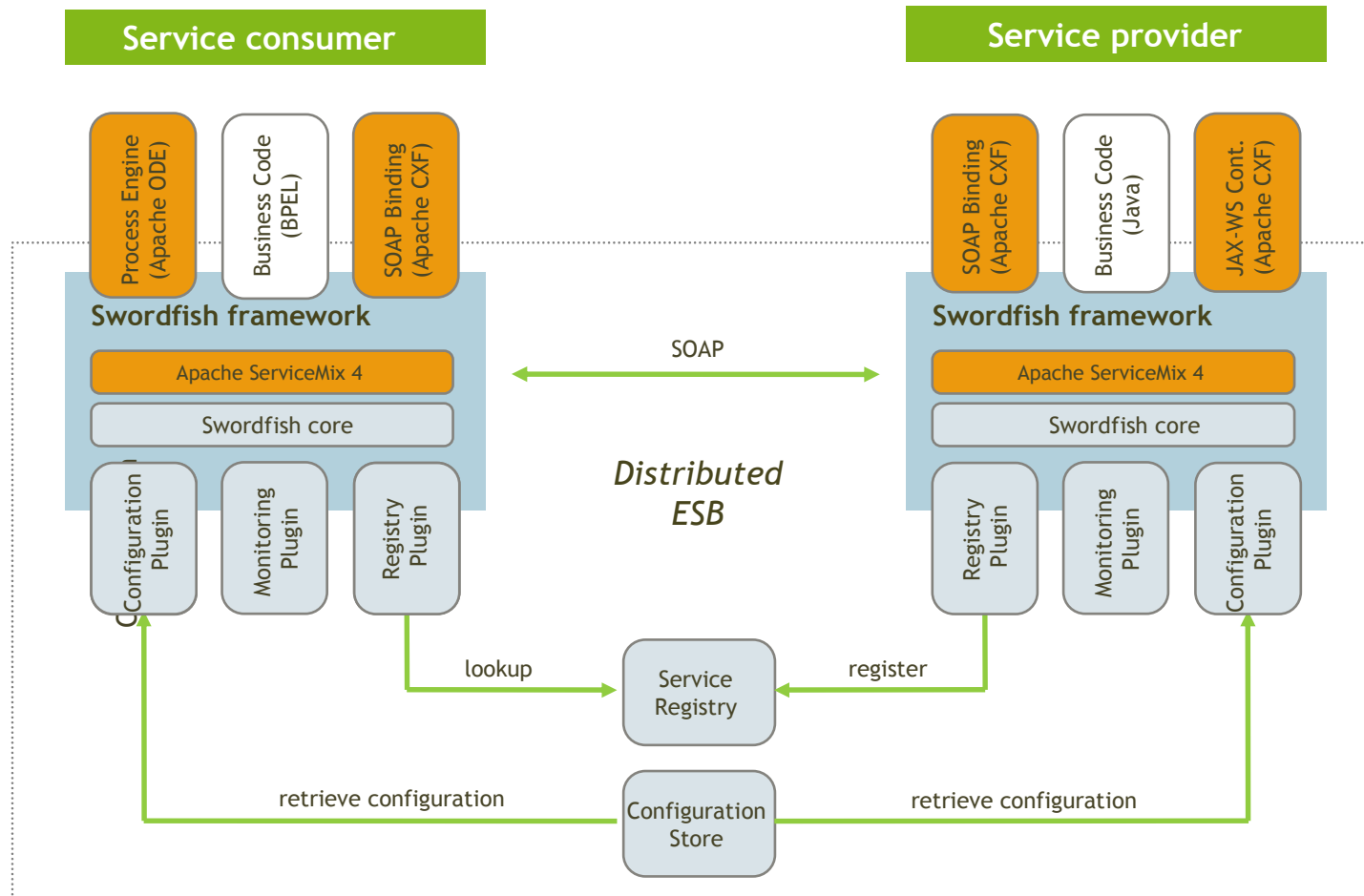
***Swordfish makes your services enterprise-  
ready.***

- *Runtime service discovery*
- *Security*
- *Monitoring*
- *Remote configuration*





## What is Swordfish?





## *A few words about OSGi and some terms*

**OSGi:** *A standard for creating highly modular Java applications, based on the concept of bundles. The Swordfish framework requires an OSGi runtime (usually Eclipse Equinox).*

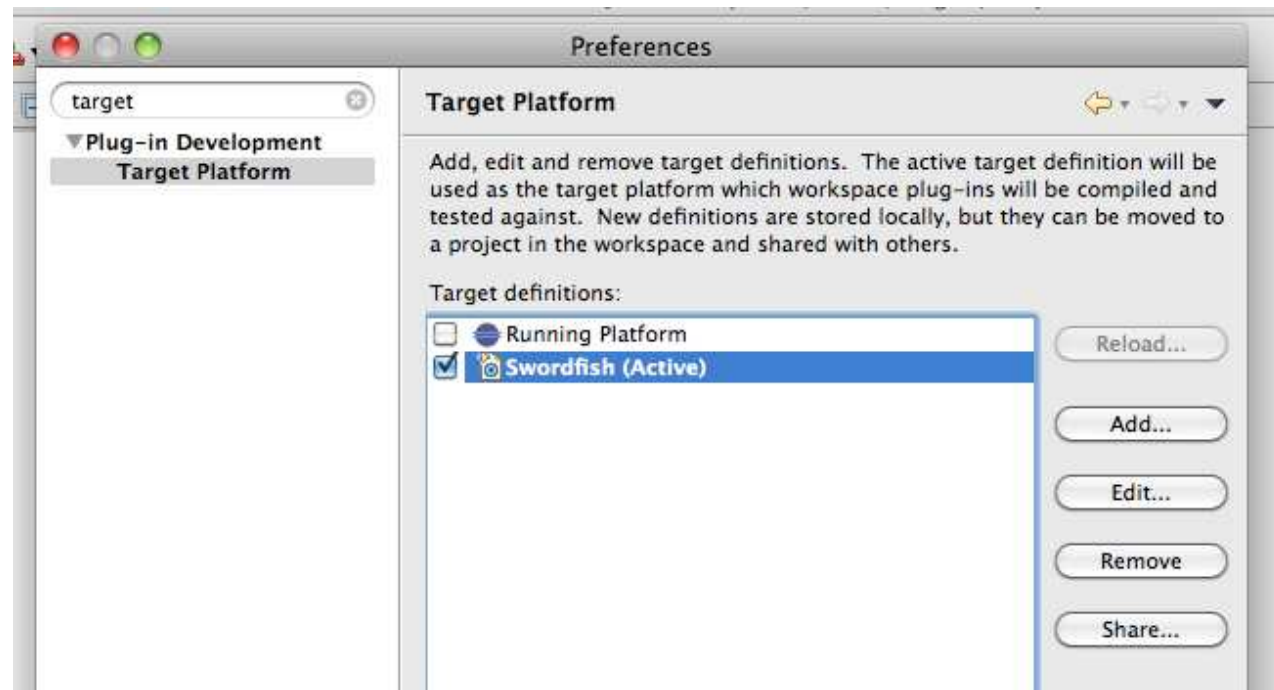
**Bundle:** *A module containing Java implementation classes and additional data that can be deployed into an OSGi runtime environment. A bundle can provide code to and use code from other bundles, allowing for better modularization.*

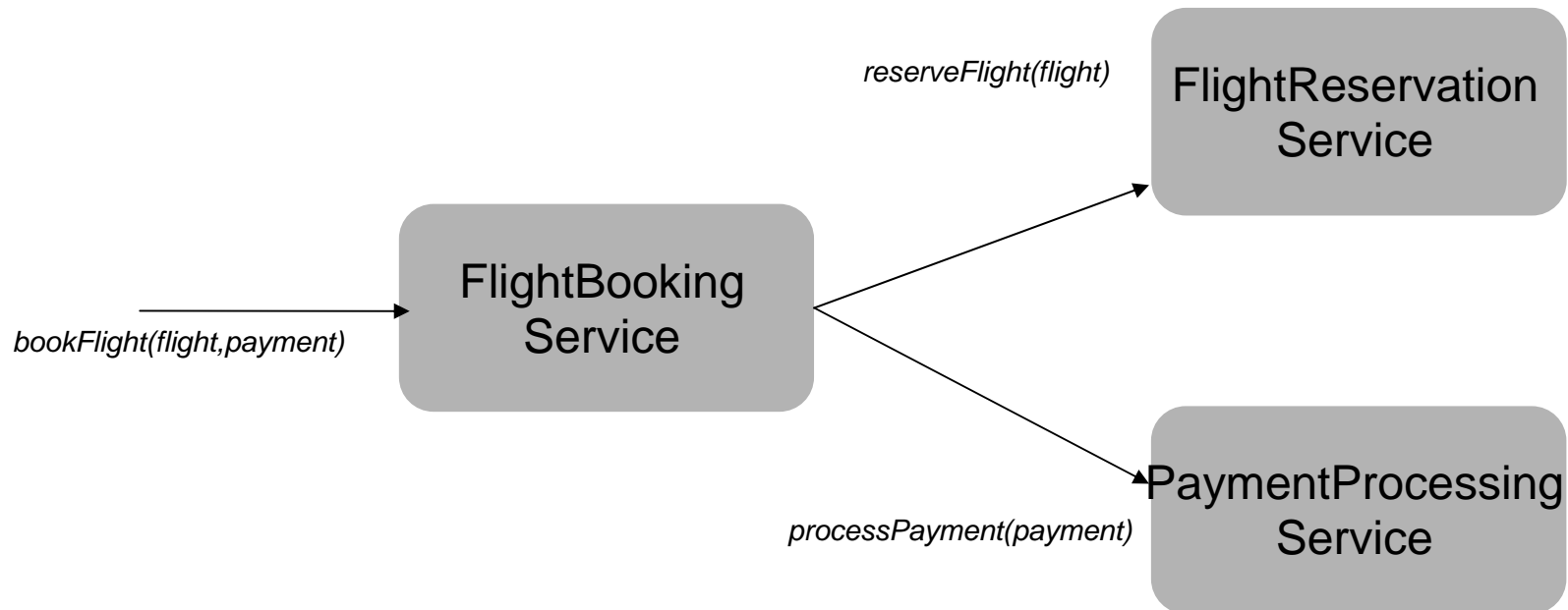
**Target platform:** *A set of OSGi bundles that defines the runtime environment for the bundles you create in your Eclipse workspace. The Swordfish target platform contains the Swordfish framework and the plug-ins you intend to use.*

**PDE:** *Plug-in development environment, the Eclipse perspective and tools you use to create bundles with the Eclipse IDE.*



- Set swordfish as target platform (use proper OSGi bundles)

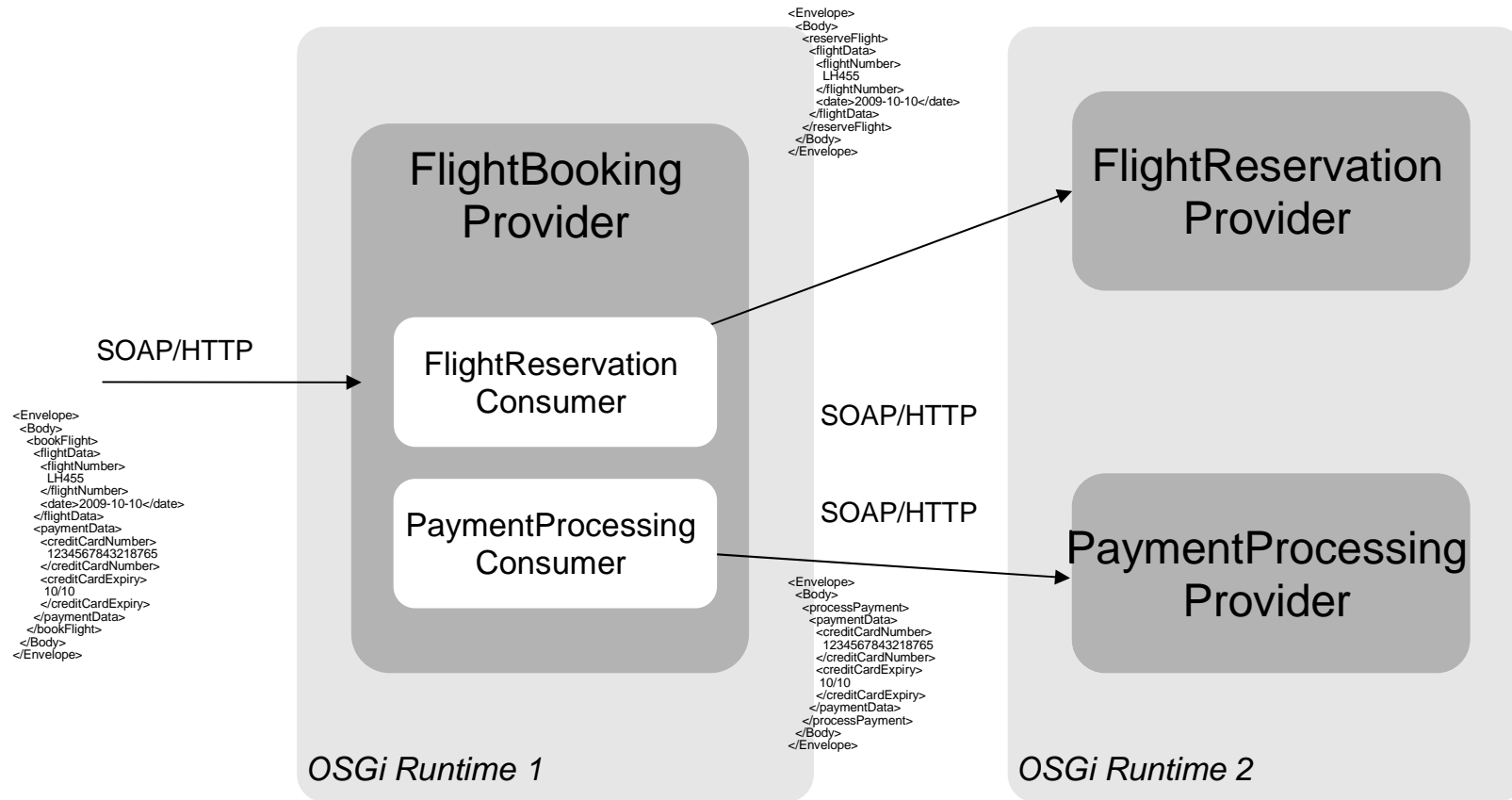


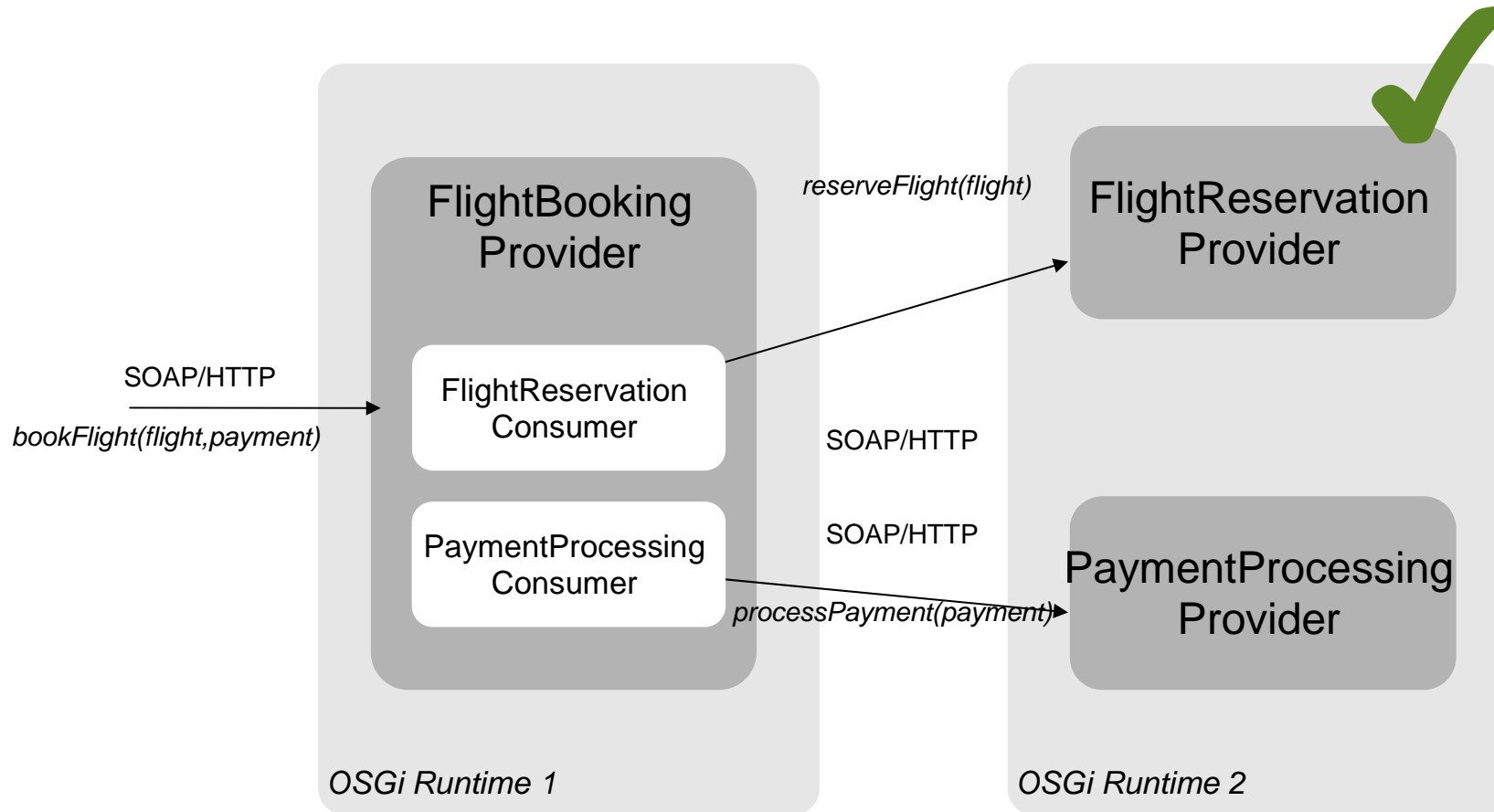


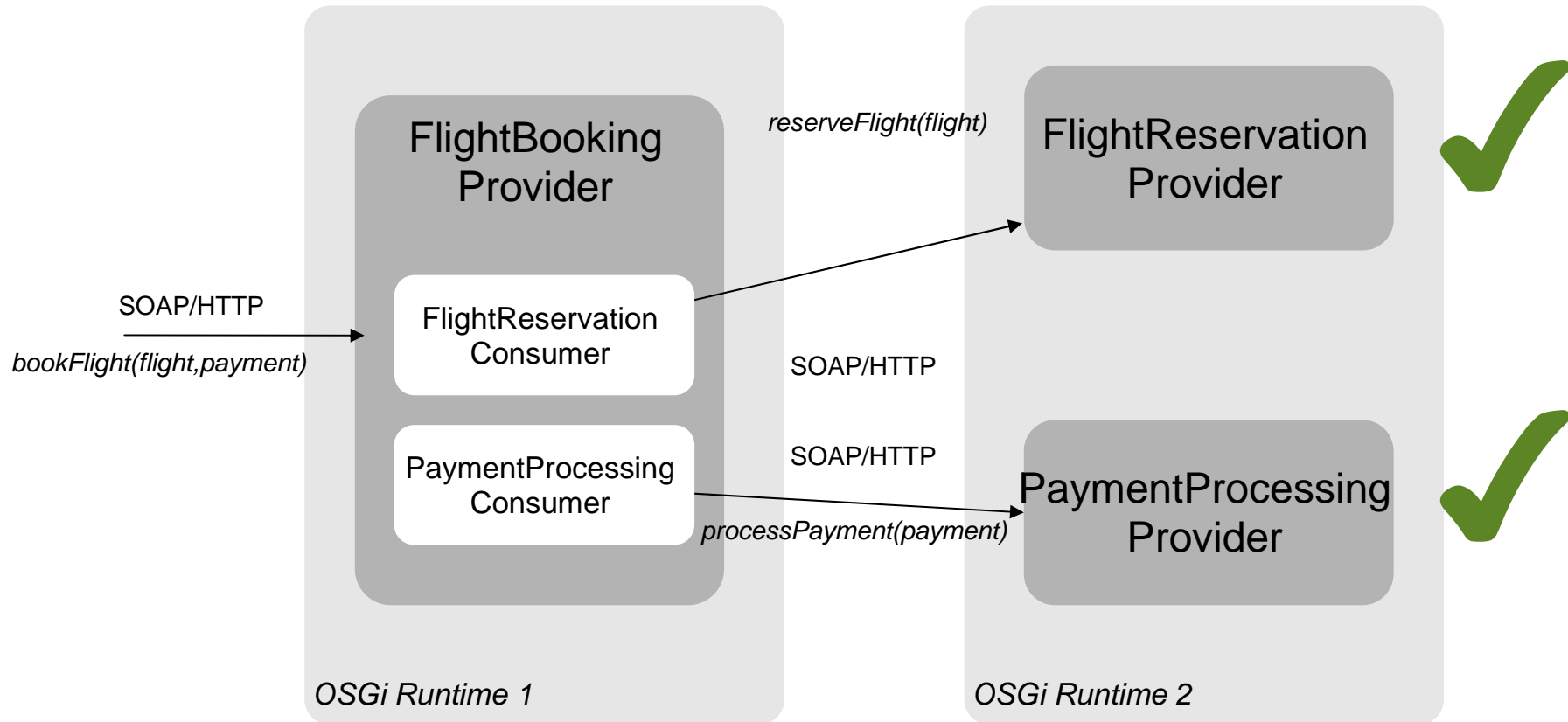
The FlightBooking service is a composite service that orchestrates calls to the FlightReservation and PaymentProcessing services.

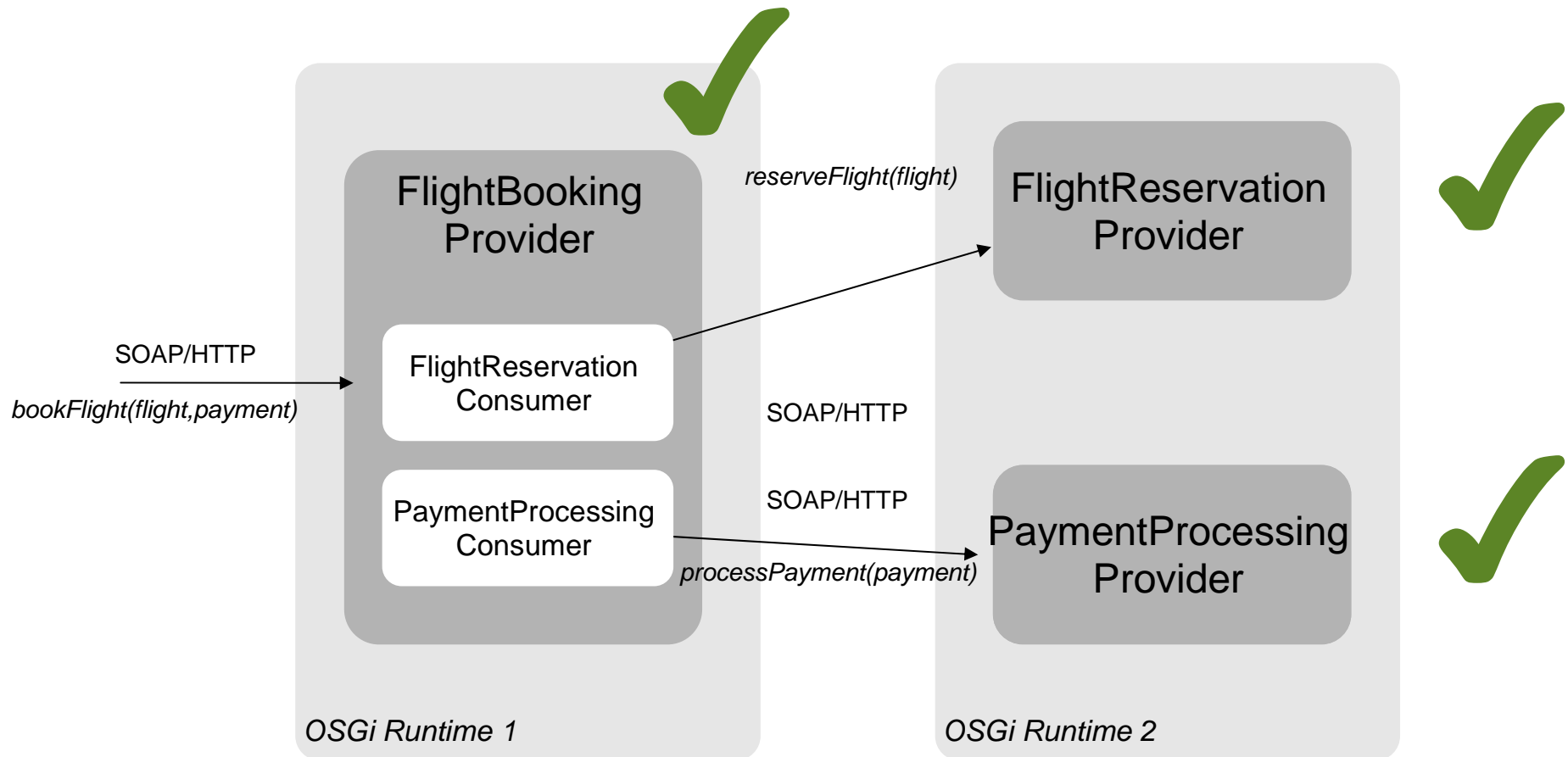
# Eclipse Day 2010 in Rome

## Demonstration Scenario (technical view)











## *Why would I want to take a closer look?*

*If you are a software developer...*

***Swordfish makes it easy to develop enterprise services on OSGi.***



*If you are an enterprise architect...*

***Swordfish makes your services enterprise-ready.***

- *Runtime service discovery*
- *Security*
- *Monitoring*
- *Remote configuration*



## *Why would I want to take a closer look?*

*If you are a software developer...*

***Swordfish makes it easy to develop enterprise services on OSGi.***



*If you are an enterprise architect...*

***Swordfish makes your services enterprise-ready.***

- *Runtime service discovery*
- *Security*
- *Monitoring*
- *Remote configuration*





## Q&A

**Dr. Alberto Lagna**  
Chief Technology Officer Biznology srl  
SOPERA master reseller for Italy

alberto.lagna@biznology.it  
www.sopera.de  
www.biznology.it

